

<div>NWS FORM E-5 (11-88) (PRES. by NWS Instruction 10-924)</div> <div>U.S. DEPARTMENT OF COMMERCE NATIONAL OCEANIC AND ATMOSPHERIC ADMINISTRATION NATIONAL WEATHER SERVICE</div>	<div>HYDROLOGIC SERVICE AREA (HSA) WFO Midland, Texas</div> <div>REPORT FOR: MONTH August</div> <div>YEAR 2025</div> <div>SIGNATURE J. DeBerry In Charge of HSA</div> <div>DATE September 15, 2024</div>
<div>MONTHLY REPORT OF HYDROLOGIC CONDITIONS</div> <div>TO: Hydrometeorological Information Center, W/OH2 NOAA / National Weather Service 1325 East West Highway, Room 7230 Silver Spring, MD 20910-3283</div>	
<div>When no flooding occurs, include miscellaneous river conditions, such as significant rises, record low stages, ice conditions, snow cover, droughts, and hydrologic products issued (NWS Instruction 10-924)</div>	

☒ An X inside this box indicates that no river flooding occurred within this hydrologic service area.

August was fairly uneventful, as faux-monsoonal rain stayed over the southwest CONUS. Only a couple of events were noted at the end of the month.

On August 29th, thunderstorms developed over Odessa in Ector County, stalling a vehicle at US Hwy 385 and 52nd Street in 1-2' of runoff.

Finally, on the 30th, thunderstorms flooded parts of East Odessa in Ector County, prompting road closures and stranding more vehicles.

Precipitation amounts from area ASOS's:

City	ASOS ID	August	July
Carlsbad, NM	KCNM	0.18"	1.66"
Fort Stockton	KFST	0.71"	0.58"
Midland Int'l	KMAF	0.42"	3.08"
Odessa	KODO	0.16"	1.04"
Terrell County	K6R6	0.71"	2.49"
Wink	KINK	M	M

Precipitation amounts from area AWOS's:

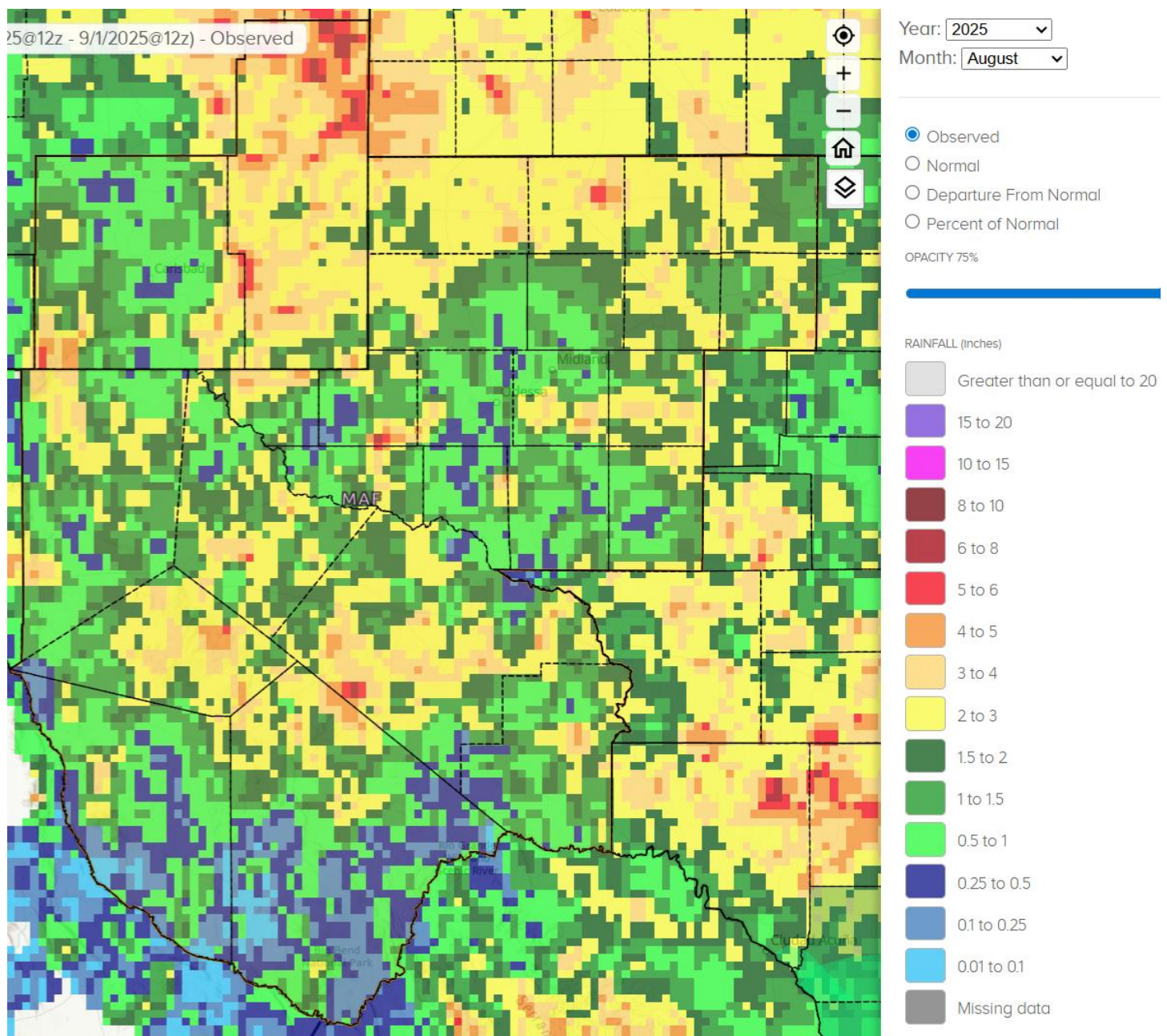
City	AWOS ID	September	August
Alpine	KE38	1.36"	2.82"
Andrews County	KE11	0.90"	2.16"
Artesia, NM	KATS	0.54"	1.08'
Big Spring	KBGP	1.95"	1.70"
Culberson County	KVHN	2.47"	0.96"
Gaines County	KGNC	1.24"	2.66"
Lajitas	KT89	M	M
Lamesa Municipal	KLUV	0.60"	1.11"
Marfa	KMRF	1.19"	1.99"

Midland Airpark	KMDD	0.38"	1.56"
Pecos County	KPEQ	2.46"	M
Presidio County	KPRS	0.03"	1.01"
Reagan County	KE41	0.37"	3.69"
Snyder	KSNK	0.69"	2.32"

Some other locations in the HSA that received notable amounts of precipitation for August were:

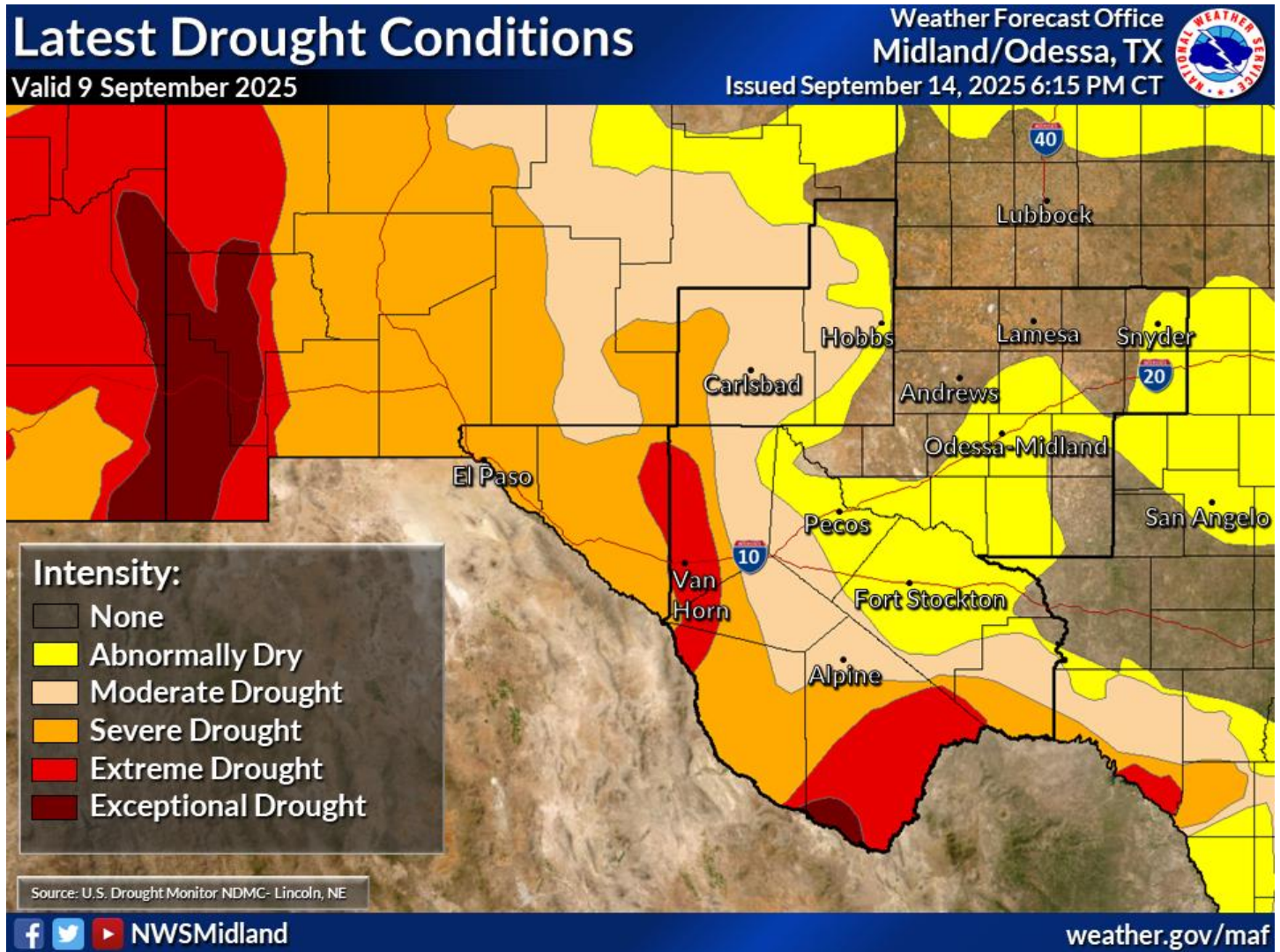
Fluvanna, Scurry County	2.98"
Jal, Lea County	3.43"
Toyahvale 13W, Jeff Davis County	3.49"
The Pinery, Culberson County	4.94"

80 locations reported rainfall for the month of August, for an HSA average of 1.43".



August Precipitation

Normal August precipitation for Midland International Air and Space Port is 1.72". Total precipitation for the year ending 1 September was 5.97", or 3.36" below normal.



Reservoir levels across the HSA averaged 51.6% of conservation capacity as of September 1st:

Reservoir (County, State)	September 1 Conserv Cap (%)	August 1 Conserv Cap (%)
JB Thomas (Scurry, TX)	35.7	37.5
Colorado City (Mitchell, TX)	61.4	63.5
Champion Creek (Mitchell, TX)	44.7	46.1
Natural Dam Salt Lake (Howard, TX)	48.4	48.4
Moss Creek (Howard, TX)	79.0	76.0
Brantley (Eddy, NM)	33.0	59.0
Avalon (Eddy, NM)	60.0	54.0
Red Bluff (Reeves, TX)	50.2	50.3

Non-Routine Products Issued for August:

Flash Flood Watches (FFA): 1
Flash Flood Warnings (FFW): 7
Flash Flood Statements (FFS): 8
Flood Advisories/Statements (FLS): 0
Flood Warnings (FLW): 0

Total Non-Routine Products Issued: 16

**cc: email: COE ABQ, HIC, IBWC ELP, IBWC PRD, LCRA, NWS ABQ, NWS EPZ, NWS LBB,
NWS MAF, NWS SJT, SRH, TAMU, TCEQ, USGS CNM, USGS SJT, WGRFC**